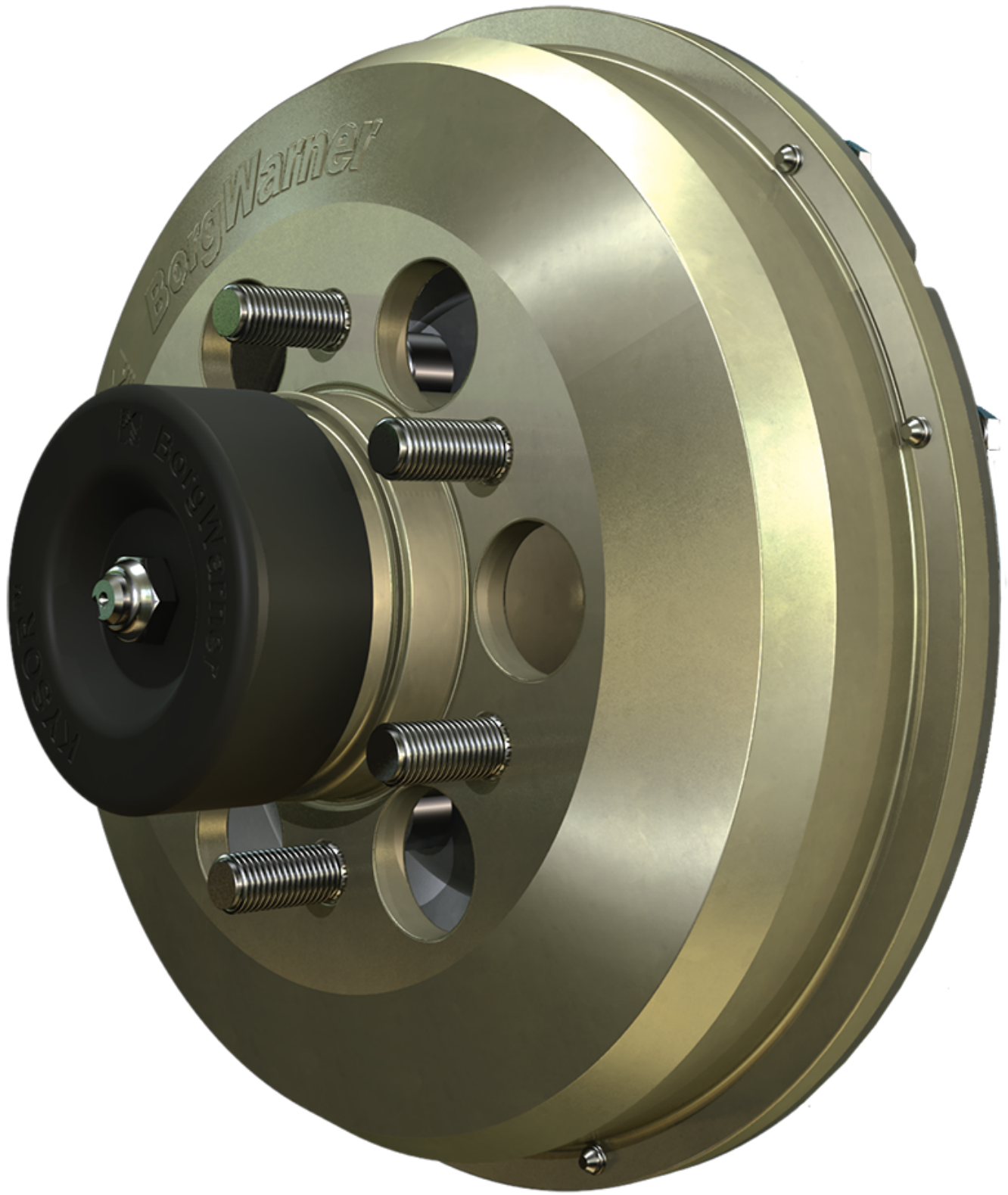




PARTS CAP



BorgWarner



OEM Quality Fans and Fan Drives

Visit Manufacturer's website (<https://www.borgwarner.com/aftermarket/thermal-systems>)

Product Highlights

Our all makes clutch allows for quick and easy replacement or repair of our On/Off Fan Drive.

All makes modular design allows for a cost effective replacement

THE Industry leader in Torque Capacity!

Easy to repair friction liner, takes less than 15 minutes and can be completed while on the truck

No spinning air connections to wear out

Top Movers - BorgWarner (Kysor) On/Off Clutch

Model	Description	Part Number
K32RA	K-Series On/Off Clutch with 2-9/16" Fan Pilot	KYS 1090 09650 01
K32RA	K-Series On/Off Clutch with 5" Fan Pilot	KYS 1090 09750 01

Product Highlights

Fan Drive provides a full range of fan speeds to maximize your fuel economy and reduce the total cost of ownership

Perfect for vocational and regional pickup and delivery applications

Smooth engagements reduce noise, dust, and maximizes belt and FIAD component life

Maintenance Free

Fans are high efficiency, high flow - for max engine cooling

Top Movers - BorgWarner Visctronic Fan Drives

Model	Engine	BW Fan Drive	Part Number
P3 and P4 Cascadia	DD13 & DD15	Visctronic 882	KYS 020005483
P4 Cascadia	Cummins 12L Natural Gas	Visctronic 882	KYS 010031690
M2-106	DD8	Visctronic 732	KYS 010028363
M2-106	DD5	Visctronic 665	KYS 010031427

Product Highlights

5-10 Pounds lighter than the competition

Only 2 pieces to convert any BorgWarner On/Off fan drive to a 2 Speed

Internal components run 70 (F) degrees cooler than the competition

Top Movers - BorgWarner DuroSpeed Fan Drive (2-Speed)

Model	Product Description	Part Number
DuroSpeed	2-Speed Clutch with 2-9/16" Fan Pilot	KYS 1090 29650 01
DuroSpeed	2-Speed Clutch with 5" Fan Pilot	KYS 1090 29750 01
DuroSpeed	Single Speed to 2 Speed Conversion Kit	KYS 1033 40700 01

Product Highlights

Liner replacement takes less than 20 minutes and can be completed while the fan clutch is still mounted on the truck. No removal of the fan or belts

This maintenance will reduce the overall cost to the customer

Top Movers - BorgWarner Repair Kits

BW Product	Part Number
------------	-------------

K32 Liner Kit	KYS 1033 40600 01
K32 Liner and Seal Kit	KYS 1033 40600 02
Bearing Kit	KYS 1033 07781 01
Bearing Kit	KYS 1033 07782 01

Using your fan drive part number, you can determine the proper liner or bearing kit by going to our online catalog

General Product Information

At BorgWarner, we understand that uptime and efficiency is what drives your business - so our product offering focus is reliability and fuel economy.

All service components are produced to the same precise tolerances as our market leading original equipment product offerings. As well, we are constantly researching and developing ways to improve fuel economy and performance, while reducing emissions. The combination of dependable technology leading products backed by reliable and responsive support has made BorgWarner the name you can count on for fans and fan drives in North America and globally.

Warranty Information

1 year, unlimited miles for service components (<https://www.diamond-gard.com/sales-brochures>)

Last updated: Monday, 01 January 0001 12:00 AM

[^Back to Top](#)

Copyright © Daimler Truck North America LLC. [Privacy Statement, Legal Notices and Terms \(https://daimler-trucksnorthamerica.com/privacy-policy\)](https://daimler-trucksnorthamerica.com/privacy-policy).

All rights reserved. Daimler Truck North America LLC is a [Daimler \(http://www.daimler.com/\)](http://www.daimler.com/) company.