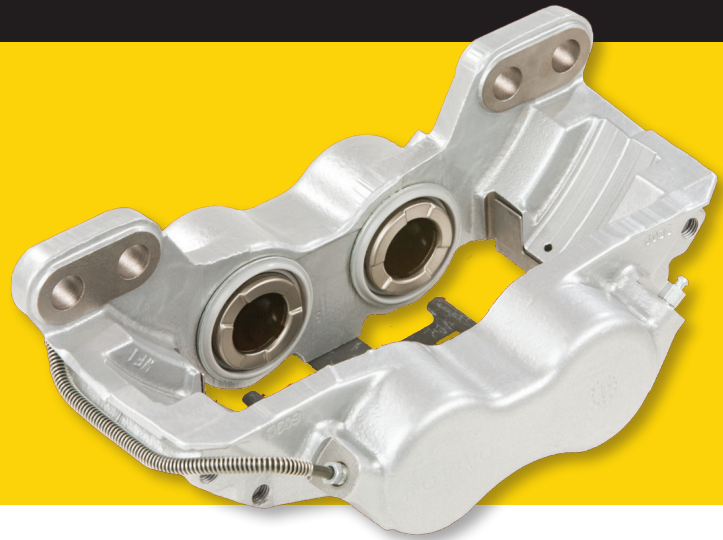


BRAKE CALIPERS

 **REPAIR & REPLACEMENT**



FEATURES, BENEFITS, AND HIGHLIGHTS

- 100% core inspection and qualification per proprietary core receiving process.
- 100% in-process fitment inspection, utilizing OE samples geometrical data via certified inspection gauges.
- Disassembly process ensures maximum components salvage and integrity.
- All wear-prone components such as elastomers, rubber, seals and fasteners are subject to mandatory replacement with new.
- 100% component inspection and testing process ensures a well defined acceptance criteria prior to assembly.
- Corrosion protected by Premium Quality E-Coat.
- 100% EOL test for pistons displacement, force and delta between pistons forces. Acceptance criteria and specs are developed by benchmarking OE samples.
- Utilization of internally developed best-in-class cleaning

TOP MOVERS

See our most current top movers at dtnapartscap.com

ALLIANCE P/N	DESCRIPTION	CATEGORY	APPLICATION
ABP N42A H55250	CALIPER HYD RX BX 73MM 2P UBLD	BXR55250, R42R55250, E-4238X, 141.80003	MD Truck/School Bus (1982-2005)
ABP N42A H55850	CALIPER HYD RX BX 73MM 2P UBLD	BXR55850, R42R55850, 141.83005, FLT308101	MD Truck/Motorcoach/School Bus (1990-2023)
ABP N42A H50478	CALIPER HYD RX MR 70MM 4P UBLD	60450478X, 60450505, 141.83010, 18-8100	MD Truck, School Bus, Transit Bus (2009-2023) Ford - F650, F750 International - 3200, 3300, 4100, 4200, 4300, 4400, 5500I, 5600I,
ABP N42A H50479	CALIPER HYD RX MR 70MM 4P UBLD	60450479X, 60450504, 141.83009, 18-8101	
ABP N42A H55717	CALIPER HYD RX BX 66MM 2P UBLD	BX055717, R42R55717, 141.70002, E-4237AX	MD Truck, School Bus (1990-2004) Freightliner, International
ABP N42A H50145	CALIPER HYD RX MR 73MM 2P UBLD	601150145X, 55252, 141.79001, 18-8005	MD Truck/School Bus (1981-1999)
ABP N42A A225L261	CALIPER AIR MR EX225L261 LH	EX225L261, EX225L261XX000	Trailer
ABP N42A A225L262	CALIPER AIR MR EX225L262 RH	EX225L262, EX225L262XX000	Trailer
ABP N42A AK012341	CALIPER AIR BX SK7 RH	K012341, K012633, 5400101100	Trailer - SAF Holland
ABP N42A AK012342	CALIPER AIR BX SK7 LH	K012342, K012634, 5400101200	Trailer - SAF Holland
ABP N42A AK069395	CALIPER AIR BX ST7 RH	K069395, K097530K50, 51830053	Trailer - SAF Holland
ABP N42A AK069396	CALIPER AIR BX ST7 LH	K069396, K097531K50, 51830052	Trailer - SAF Holland
ABP N42A A2250330	CALIPER AIR WB PAN22 RH	640 225 033 0, 40 225 016	Trailer - SAF, IMT, Ridewell
ABP N42A A2250320	CALIPER AIR WB PAN22 LH	40 225 032 0, 40 225 015	Trailer - SAF, IMT, Ridewell
ABP N42A A2250810	CALIPER AIR WB PAN22 RH	640 225 081, 640 225 037	Trailer - Hendrickson
ABP N42A A2250800	CALIPER AIR WB PAN22 LH	640 225 080, 640 225 036	Trailer - Hendrickson
ABP N42A A3220070	CALIPER AIR WB MAXX22T LH	640 322 007 0, S-35973-L	Trailer - Hendrickson
ABP N42A A3220080	CALIPER AIR WB MAXX22T RH	640 322 008 0, S-35973-R	Trailer - Hendrickson



WARRANTY

Backed by the Alliance 1-year/unlimited-mile warranty² 

ALL MAKES AND MODELS¹



DRIVING VALUE

With parts and accessories for all makes and models¹, Alliance™ Parts is the smartest choice for value on the road. Readily available, easily affordable and assured in quality, Alliance has everything you need to deliver.

PRODUCT LINES

- Accessories (Chrome)
- Accessories (Stainless Steel)
- Aero Accessories
- Air Conditioning (A/C) Compressors
- Air Assemblies
- Air Brake Compressors
- Air Dryer Cartridges
- Air Hoses
- Air Springs
- Alternators
- Antennas
- Back-Up Alarms
- Batteries
- Bellows
- Belts & Tensioners
- Brake Calipers
- Brake Drums
- Brake Shoes & Kits
- Bumper Guards
- Bumpers (Chrome)
- Bumpers (Composite)
- Charge Air Coolers (CACs)
- Clutches
- Coolant
- Diesel Exhaust Fluid (DEF)*
- Diesel Particulate Filters (DPFs)*
- Differentials
- Drivelines
- Electrical Lines
- Exhaust Lines
- Fan Clutches & Accessories
- Fenders
- Fittings
- Flex Pipes
- Fuel Pumps
- Fuel Tanks
- Fuel Water Separators
- Glass
- Grille Guards
- Grilles
- Heating, Ventilation & Air Conditioning (HVAC)
- Height Control Valves
- Hydraulic Bottle Jacks
- Light-Emitting Diode (LED) Lighting
- Mattresses
- Mirrors
- Oil Pumps
- Radiators
- Radio
- Shock Absorbers
- Slack Adjusters
- Spring Brakes & Chambers
- Starters
- Steering Gears
- Steering Pumps
- Suspension Bushings
- Transmissions
- Turbochargers
- Variable Pressure Output Devices (VPODs)
- Water Pumps
- Wheel End Bearings
- Wheel Seals
- Wheels (Aluminum)
- Wheels (Steel)
- Wiper Blades
- XY Shifters

See our most current product lines at allianceparts.com.
*Sales restrictions may apply. Check with your local dealer for availability.

FOLLOW US



allianceparts.com



[@allianceparts](https://twitter.com/allianceparts)



facebook.com/allianceparts

FIND YOUR NEAREST LOCATION
AT ALLIANCEPARTS.COM



Specifications are subject to change without notice. Copyright © Daimler Trucks North America LLC. All rights reserved. Alliance Parts is a brand of Daimler Trucks North America LLC, a Daimler company. ¹For nearly all heavy-duty truck makes and models. ²See warranty for complete details and limitations.