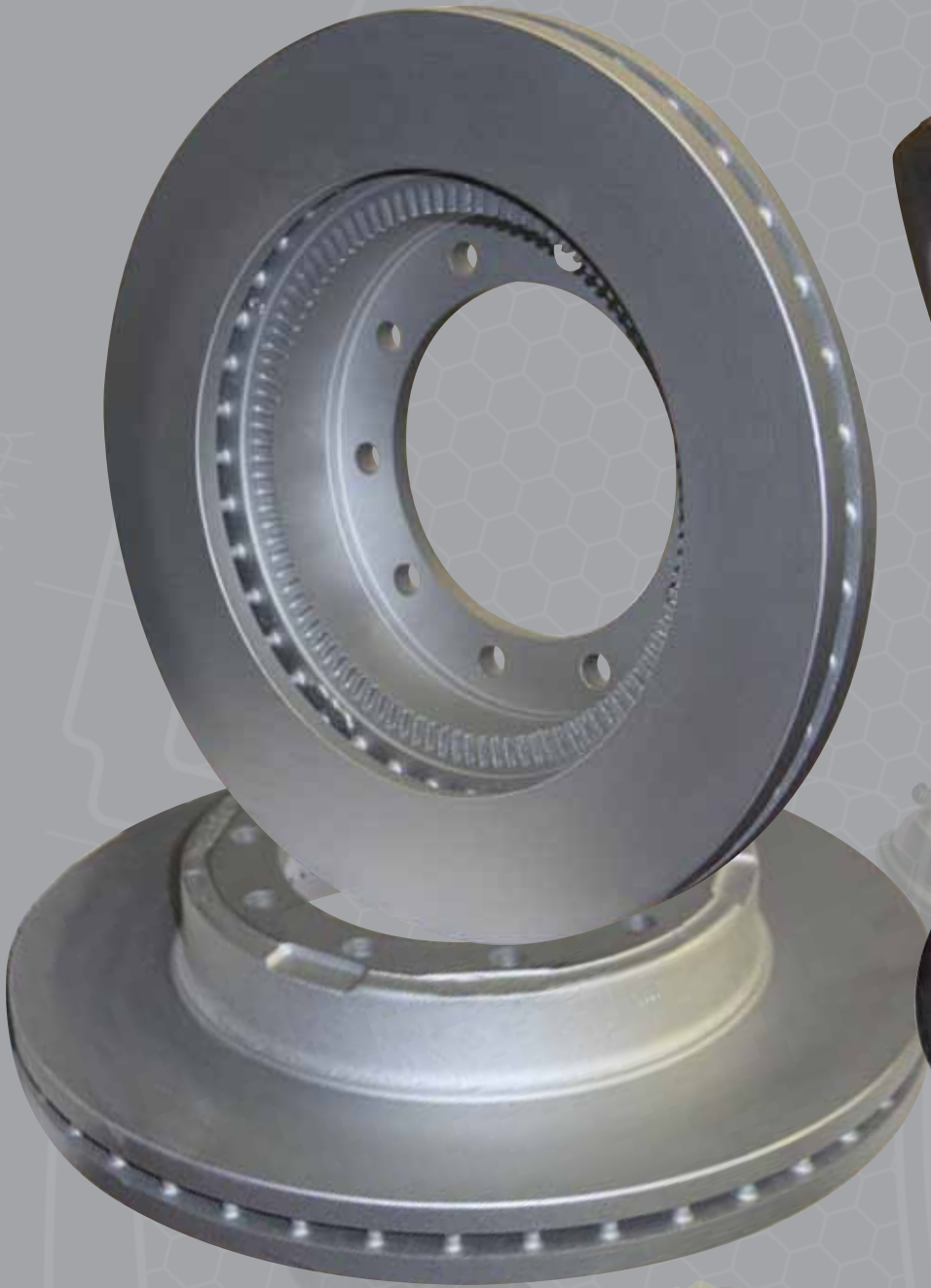


DTNAParts™

Strategically engineered Solutions.



Building OE-Quality Components.



***Quiet Ride® Pads,
Rotors, Calipers***



***INTENTIONAL
ENGINEERING
HYDRAULICS
SOLUTION***

Ceramic-Enhanced Dry Formulation: Less Resin, Higher Torque, Quieter Braking



SILVERBACK Quiet Ride® uses proprietary ceramic-enhanced dry-mix formulations to produce high-torque, low-noise heavy duty disc pads.

High-volume manufacturers use wet-mix formulations to pour their ingredients into large molds. These ingredients are mixed with high levels of resins that can lead to excessive noise and inconsistent braking performance that increase stop distance as much as 50%!

High Pressure Positive Molding: Unitized Construction For The Best Results

SILVERBACK's Ceramic Enhanced dry formulations are finished with a positive molding process that yields higher torque, denser friction, quieter braking and longer life.

Ultimately, the backing plate and formulation are molded together in a unitized one-step process.

A. The disc pad backing plate is inserted into the press.

B. The Positive Mold is assembled atop of the backing plate.

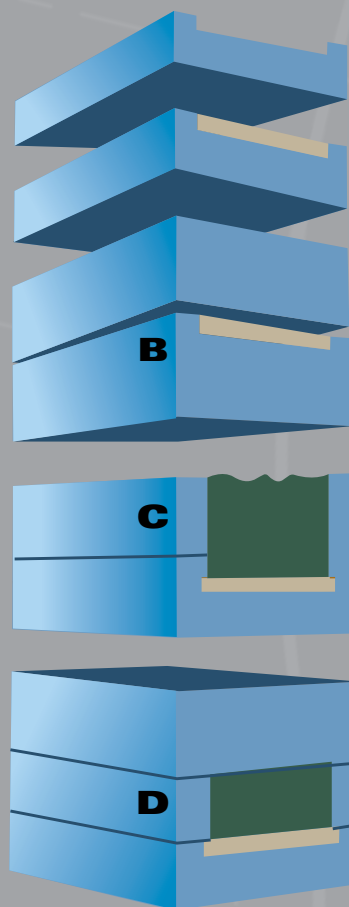
C. SILVERBACK's proprietary Ceramic Enhanced dry formulation is added to the positive mold.

D. High pressure molding processes exert up to 500kg/cm² of pressure onto the friction.

This high-pressure, dry formulation Positive Molding process means we stabilize the mold compression and maintain better friction density than flash molding processes that are susceptible to hypobaric failures.

It also severely reduces "post curing" where frictions made with high-resin contents squeal as the resin bleeds to the surface during use.

Positive Molding and unitized construction maximizes brake geometry and pad life, while reducing brake noise.



Engineered To Exceed The Industry's Exacting Tolerances

SILVERBACK manufactures every Quiet Ride® heavy duty disc pad to the highest standards in the industry.

Our engineers know that reduced noise and longer life begin with maintaining the tightest tolerances in the industry.

For that reason, we manufacture our backing plates and shims out of more than two dozen different specifications

of steel, so that each one is manufactured to engineering specifications.

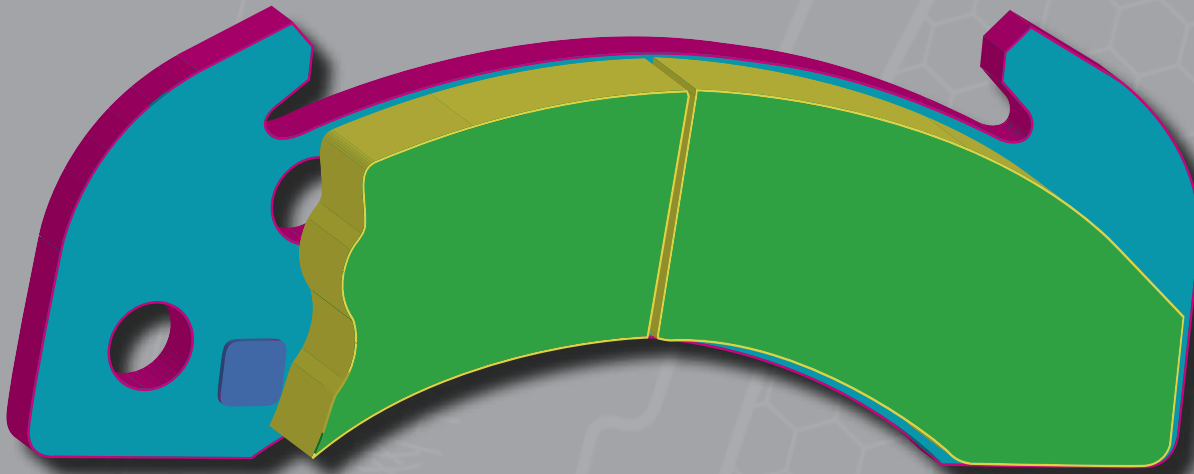
After each backing plate has been stamped and machined, it is coated with an electro deposition process coating. This E-coat feature is designed to pass SAE J2334 salt spray corrosion testing.

Reducing corrosion will ensure braking consistency and reduce noise.

Exacting fit between the backing plate and pad is essential for optimum performance.

Quiet Ride® precision FMSI measurements are crucial to the unitized construction process.

Only with the precise selection of metals, precision measurements and unitized construction, can you guarantee brake geometry.



SILVERBACK DISC PAD #	INDUSTRY #	OVERALL LENGTH	OVERALL WIDTH	FRICTION THICKNESS (Includes plate)
D184-7806CE	D184	254.0mm (10.03") 205.0mm (8.07")	97.5mm (3.83") 80.0mm (3.15")	16.0mm (.63") 21.8mm (.85")
D224-7807CE	D224	213.4mm (8.40")	101.5mm (3.96")	18.5mm (.73")
D225-7808CE	D225	269.5mm (10.61") 205.0mm (8.07")	100.0mm (3.93") 80.0mm (3.15")	22.3mm (.87") 26.5mm (1.04")
D236-7809CE	D236	228.6mm (9.00")	102.6mm (4.04")	25.1mm (.98")
D769-7636CE	D769 D1032 D1418	240.0mm (9.45") 240.0mm (9.45") 240.0mm (9.45")	88.6mm (3.49") 88.6mm (3.49") 88.6mm (3.49")	25.2mm (1.00") 25.2mm (1.00") 25.2mm (1.00")
D786-7655CE-THICK	D786	244.1mm (9.61")	85.1mm (3.35")	26.8mm (1.05")
D786A-7654CE-THIN	D786A	244.1mm (9.61")	85.1mm (3.35")	20.3mm (.80")
D1066-7972CE	D1066 D777	222.0mm (8.74")	64.5mm (2.54")	20.3mm (.80")

Silverback HD's Intentional Engineering Matches Quality Calipers With Rotors and Pads

SILVERBACK heavy duty hydraulic rotors are made with high density G3500b grey iron to effectively dissipate heat and prevent warping.

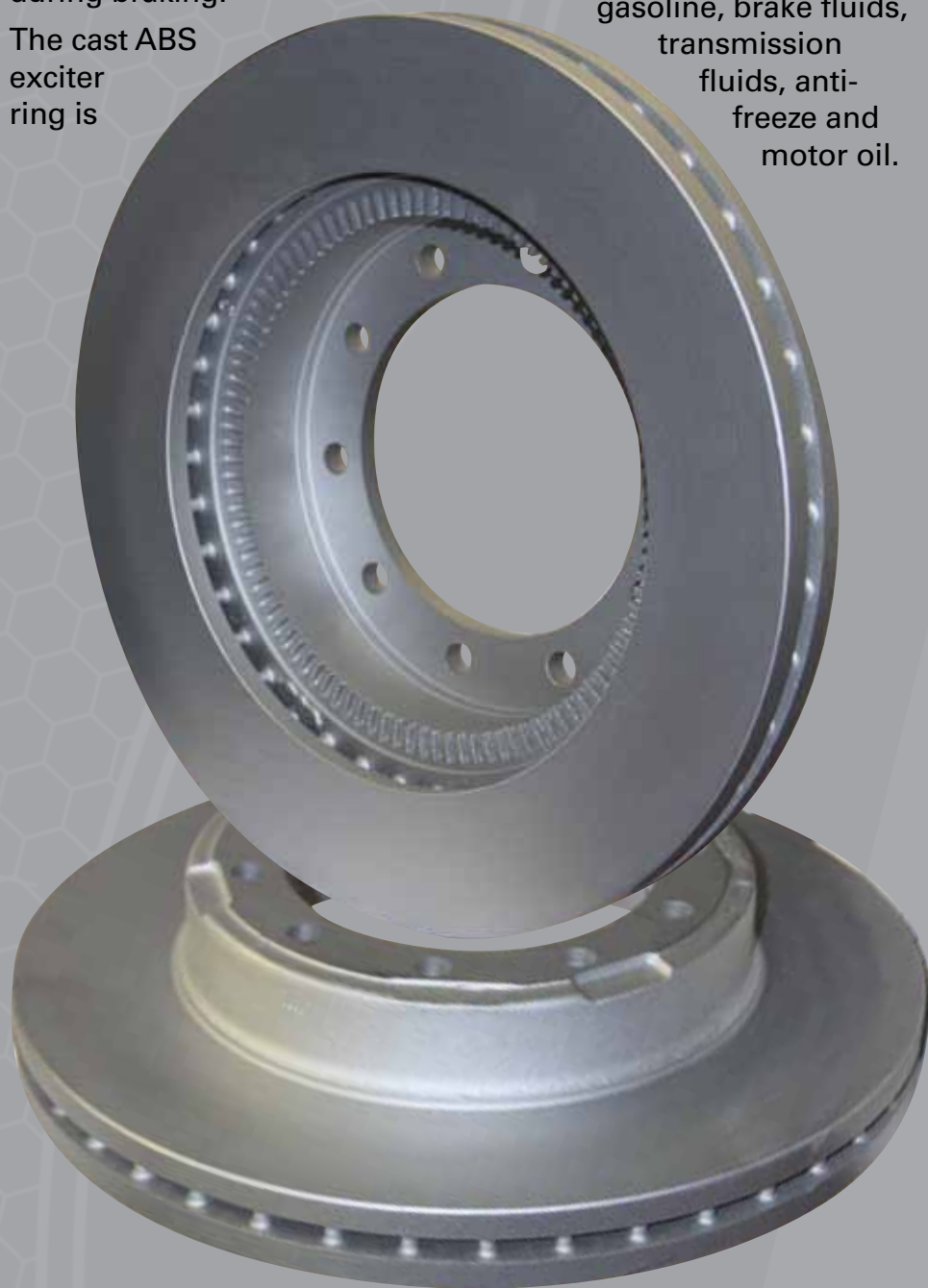
Each rotor is precision mill balanced to ensure brake geometry and eliminate noise, vibration and harshness during braking.

The cast ABS exciter ring is

finished with precision CNC milling equipment for greater accuracy.

SILVERBACK's Airstream venting technology reduces heat and increases brake life.

Patented GeoMet® coating is applied to every rotor to resist corrosion and solvents like gasoline, brake fluids, transmission fluids, anti-freeze and motor oil.



- ***Ceramic enhanced dry formulation produces higher torque, quieter braking.***
- ***All Silverback rotors are built with G3500b grey iron to maximize heat dissipation.***
- ***Induction-cured GeoMet® coating is solvent and corrosion resistant.***
- ***Calipers are constructed with D5506 ductile iron, yielding 55,000 psi of tensile strength.***
- ***Synthetic, North American seals used for thermal resistance to prevent leaking.***
- ***Phenolic resin pistons reinforced to reduce expansion/contraction and prevent leaking.***

Strategically engineered Solutions.



Building OE-Quality Components.

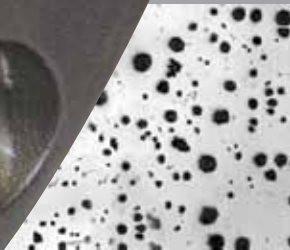
OE-Grade Calipers: Superior Ductile Iron, Pistons, Seals for Longer Life



SILVERBACK heavy duty hydraulic calipers are made with high grade D5506 ductile iron, yielding more than 55,000 psi of tensile strength.

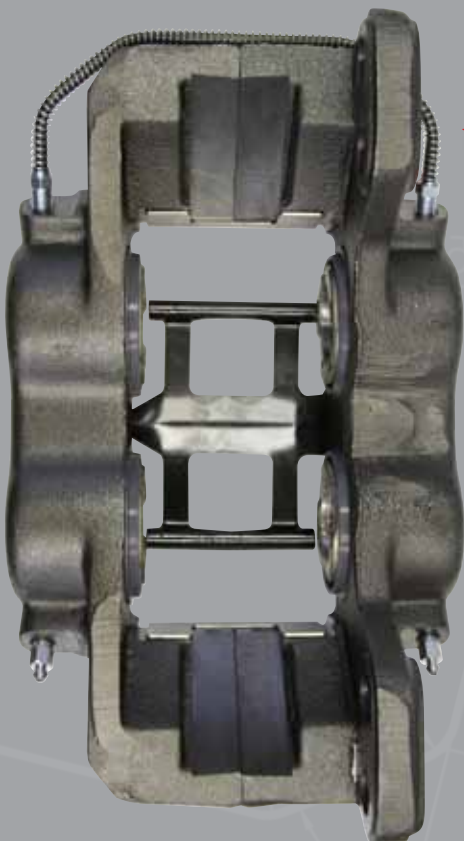
North American-sourced synthetic seals, provide excellent thermal resistance that reduce leaking.

SILVERBACK caliper hardware includes tempered Grade 8 bolts and wire-wrapped steel brake lines.



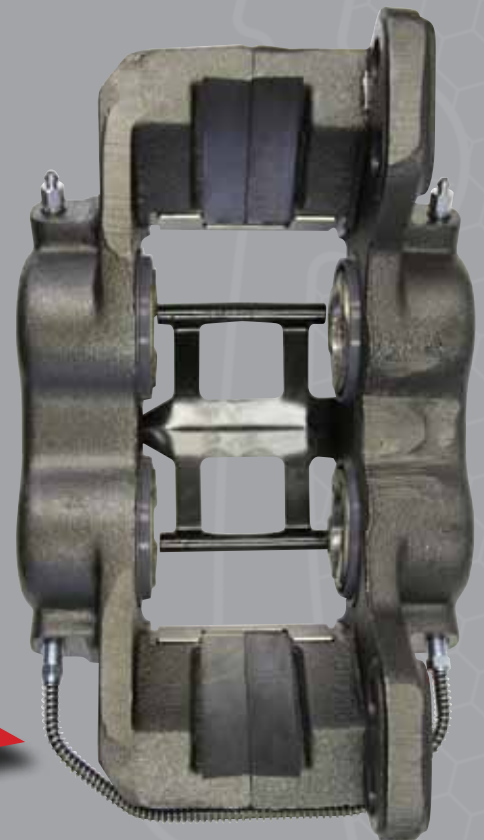
Pistons are made with patented North American Sumitomo bakelite. This fiber substrate-reinforced resin reduces heat expansion and contraction under severe temperature fluctuations, thus reducing leaking.

The fused metal cap promotes long term heat resistance and oxidation resistance, both of which can lead to cracking and premature wear.



Interchangeable transfer hoses and bleeder valves make Silverback 70mm, 4 piston calipers special dual purpose.

ONE CALIPER FITS LEFT OR RIGHT!



www.silverbackHD.com



SILVERBACK ROTOR SPECIFICATIONS

SILVERBACK ROTOR #	APPLICATION	DIMEN- SIONS	SPECS	REPLACES						
				EUCLID	WEBB	MERITOR	OEM #	GUNITE	BENDIX/ FORM. BLUE	PERFORMANCE FRICTION
14HR1394G	Dodge/Ford/Sterling Rear Ford LCF/IHC Front/Rear	15.35 x 4.88	10 Hole 0.50				TRW 141394		E12570120	
19HR996G	Ford Front/Rear IHC Front/Rear	15.35 x 1.91	10 Hole 0.53	E-14738			CONMET 10019996		E12588025	390.048.20
54HR102G	GM Front	14.75 x 3.81	5 Hole 0.66	E-4229	54102P	122687	15619954 15515768	D6054	141271 E12585013	N/A
54HR104G	GM/Chevrolet Front	14.75 x 3.81	6 Hole 0.66	E-9804	54104P	122688		D6054A	141585 E12685009	N/A
54HR105G	Ford Front ABS	14.75 x 3.81	6 hole 0.78	E-11323	54105P	123480			E12584020	N/A
54HR301G	GM Front/Rear	15.39 x 3.40	10 Hole 0.59	E-4230	54301P	122729	156199700 155144016	D6052	141272 E12585006	N/A
54HR769G	Navistar Front ABS	15.00 x 3.50	5 Hole 0.78	E-6114	54769P-65	123573	2594594C1		141476 E12588021	381.089.20
54HR770G	IHC Front/Rear ABS	15.00 x 3.50	6 hole 0.78	E-6115	54770P-65	123572	164677C1 2505097C1	D6194AM	141475 E12588020	381.089.30
54HR771G	Ford/Freightliner/Navistar/ Kenworth/Peterbilt/ Sterling/Blue Bird	15.00 x 4.44	10 Hole 0.59	E-12523 E-4247	54771P-65	123552	2594596C1	D6183M	141494 E12588018	381.113.20
54HR773G	Ford/Freightliner/Navistar/ Kenworth/Peterbilt/ Sterling/Blue Bird	15.00 x 3.20	10 Hole 0.58	E-11470	54773P-65	123550	2594595C1	D6176M	E12588019	381.081.20
54HR775G	GM Front/Rear Bluebird Front/Thomas Front/Rear	15.38 x 3.40	10 Hole 0.58	E-12524	54775P-65	123557			E12585019	390.086.20

SILVERBACK CALIPER SPECIFICATIONS

SILVERBACK DISC PAD #	SILVERBACK CALIPER #	DESCRIPTION	APPLICATION	YRS USED	REPLACES		
					EUCLID	BENDIX	DAYTON
D184-7806CE	55CL314	2.60" Bendix	IHC/Freightliner/ Thomas	1990-2004	E-4237X	R55314 E14675007	604907
D224-7807CE	55CL251	2.50" Dayton	GM/Ford/Meritor	1979-2008	E-11117X	R55251 E14684106	604905
D225-7808CE	55CL250	2.88" Bendix	IHC/Freightliner/ Thomas	1979-2008	E-4238X	R55250 E14685008	604904
D236-7809CE	55CL252	2.88" Dayton	Ford	1983-1999	E-4245X	R55252 E14684006	604908
D769-7636CE	13CL706-7	70mm Meritor R/L 3-hole	IHC/Ford	2009-2015	E-13706 E-13707	E14688014 E14688015	
D769-7636CE	14CL684012-3	70mm Meritor R/L 2-Hole	Bluebird/GM/ Freightliner/ Sterling/Thomas	2000-2015	E-11733-SL E-11734-SL	E14684012/3 E14684018/9	
D1066-7972CE	14CL7076	60mm TRW Right	IHC/Ford	2005-2015	E-12253	E14670076	
D1066-7972CE	14CL7077	60mm TRW Left	IHC/Ford	2005-2015	E-12254	E14670077	
D786A-7654CE-THIN	55CL849	66mm Bosch	IHC/Freightliner/ Sterling/ Thomas	1985-2013	E-11750X	R55849 E14688008	604911
D786-7655CE-THICK	55CL850	73mm Bosch	IHC/Freightliner/ Sterling/ Thomas	1998-2013	E-11756X	R55850 E14688010	604912

Silverback HD Products
5600 Timberlea Boulevard
Mississauga, Ontario L4W 4M6
Tel: 855-244-7272 (SBSB)
tech.support@silverbackhd.com



Scan for more information
about Silverback

Silverback is a registered trademark of Silverback HD Products.

Meritor is a registered trademark of ArvinMeritor. WEBB is a registered trademark of WEBB Wheel Products, Inc. Performance Friction is a registered trademark of Performance Friction Corporation. Gunite is a registered trademark of Gunite Corporation. Dayton is a registered trademark. Bendix is a registered trademark. Euclid is a registered trademark of ArvinMeritor. Any references in this catalog to company names or trademarks are solely for identification and cross reference purposes.

Copyright Silverback HD Products. All Rights Reserved.

SB-HY-0815