

# Thomas Bus

## *New Weldon*

### *Stop/Tail, Turn, Back-up Lights*



1/30/2019 Update



Weldon will be discontinuing the current incandescent and LED Stop/Tail, Turn, Back-up lamps. These lights will be replaced by new designs with new improved technology and features.

The new 5802-2100 series LED lights with now feature surface mounted LEDs (SMT) with improved performance that meets DTNA 49-00085 Specs.

The new 5801-9100 series incandescent lights now features a serviceable design. Fit, form, and function will be the same.

## Old versus new part numbers:

Current Part Numbers		Part Description	New Part Numbers	
Weldon Part Number	TBB Part Number		Weldon Part Number	TBB Part Number
<b>LED Stop/Tail, Turn, Backup</b>				
5802-1100-10	163833	STOP TURN TAIL LIGHT, RED LED, WELDON, 5	5802-2100-10	221389
5802-0100-20	127568	TURN LIGHT, AMBER LED, WELDON, 5802-0100	5802-2100-20	221390
5802-0100-21	150898	ARROW TURN LIGHT, AMBER LED, WELDON, 580	5802-2100-21	221392
5802-0100-30	127574	REVERSE LIGHT, CLEAR LED, WELDON, 5802-0	5802-2100-30	221391
<b>incandescent Stop/Tail, Turn, Backup</b>				
5801-0100-10	127562	STOP TURN TAIL LIGHT, RED INCANDESCENT,	5801-9100-10	220410
5801-0100-20	127567	TURN LIGHT, AMBER INCANDESCENT, WELDON,	5801-9100-20	220411
5801-0100-21	127569	ARROW TURN LIGHT, AMBER INCANDESCENT, WE	5801-9100-21	220412
5801-0100-30	127573	REVERSE LIGHT, CLEAR INCANDESCENT, WELDO	5801-9100-30	220414



## 5802-0100 Series (current) versus 5802-2100 Series: No Visible Changes



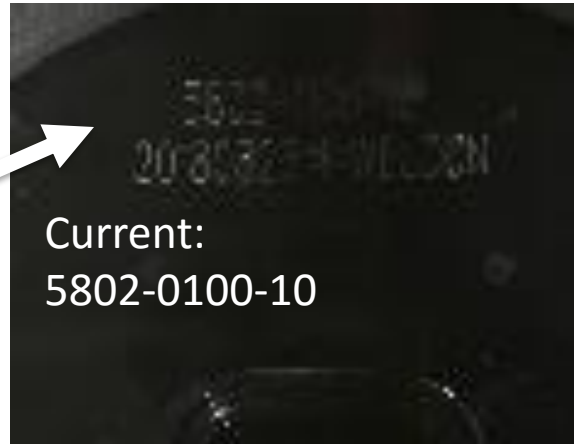
↑ New versus Current ↓



Parts are direct replacements, same fit, form, and improved function



5802-0100 Series (current) versus 5802-2100 Series



Current:  
5802-0100-10



New:  
5802-2100-10



5801-0100 Series (current)



Current 5801 Series Incandescent light

Features a flat lens and non-serviceable bulb.



versus NEW... 5801-9100 Series- same Fit, slightly different Form, improved Function...serviceable design



versus 5801-9100 Series- same Fit, slightly different Form, improved Function...serviceable design. The design has a curved lens and uses a serviceable wedge based bulb



Light will use #3157 Wedge base bulb that are available at dealerships and auto part stores.



New 5802 LED Stop/Tail, Turn and Back-up Lights will begin shipping to TBB plants  
2/14/2019

There are limited quantities of current design available to ship for DTNA  
service/aftermarket

Orders will need to be converted to the new part numbers at that time.

5801 Incandescent Stop/Tail, Turn and Back-up Lights will begin shipping to TBB plants  
2/28/2019

There are limited quantities of current design available to ship for DTNA  
service/aftermarket

Orders will need to be converted to the new part numbers at that time.

Weldon will work closely with DTNA planner to convert orders when supply is exhausted

