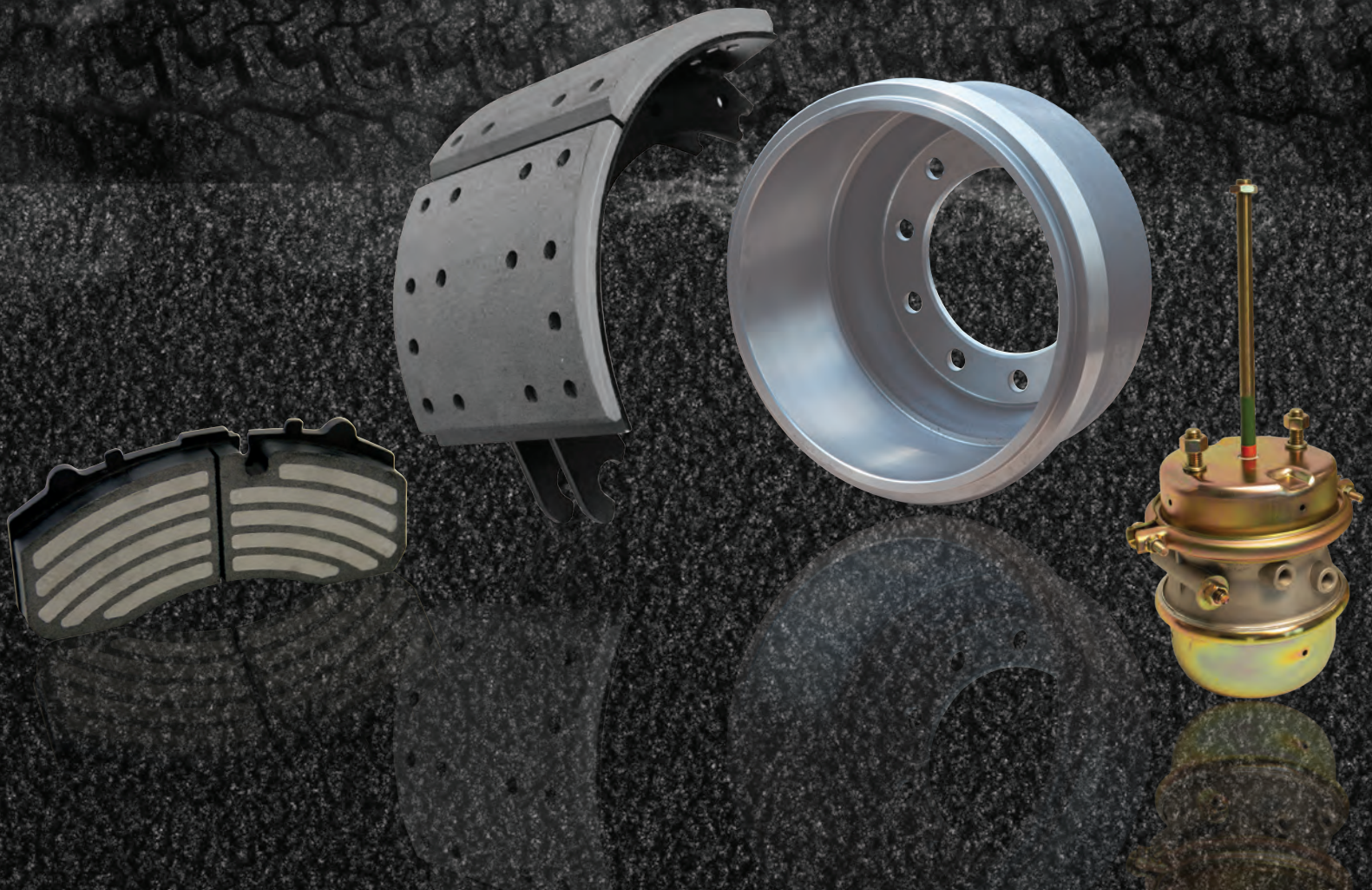


**WE'VE DONE THE MATH. YOU WIN.**

**RELIABLE QUALITY & REASONABLE PRICES**  
**DO THE MATH WITH WISDOM. YOU'LL ALWAYS WIN.**







## New Steel, No Core Wheel Kits

- **Built with Your Cost in Mind.**
  - Great quality at a low price.
- **No Cores, No Hassle.**
  - One less thing to worry about.
- **Good Service Life.**
  - Made with high grade new steel.
- **Safety is Priority.**
  - Proprietary friction formula provides safe and secure braking.



### CROSS REFERENCE

Part Number	FMSI#	Description	Drive, Steer or Trailer
WK1308E-23KW	1308TTD	15x4 Eat Style Wheel Kit	Steer
WK1443E-23KW	1308TTD	15x4 Eat ES Style Wheel Kit	Steer
WK4311E-23KW	4311JD	16.5x7 Eat Style Wheel Kit	Drive
WK4515Q-20KW	4515ED	16.5x7 Merit Q Style Wheel Kit	Drive, Trailer
WK4515Q-23KW	4515ED	16.5x7 Merit Q Style Wheel Kit	Drive, Trailer
WK4515XEM3-23KW	4515ED	16.5x7 Fru Style Wheel Kit	Trailer
WK4702Q-20KW	4702D	15x4 Merit Q+ Style Wheel Kit	Steer
WK4702Q-23KW	4702D	15x4 Merit Q+ Style Wheel Kit	Steer
WK4707Q-20KW	4707D	16.5x7 Merit Q+ Style Wheel Kit	Drive, Trailer
WK4707Q-23KW	4707D	16.5x7 Merit Q+ Style Wheel Kit	Drive, Trailer
WK4709ES2-20KW	4709D	16.5x7 Eat ES2 Style Wheel Kit	Drive
WK4709ES2-23KW	4709D	16.5x7 Eat ES2 Style Wheel Kit	Drive
WK4711Q-23KW	4711D	16.5x8.625 Merit Q+ Style Wheel Kit	Drive, Trailer
WK4715Q-23KW	4715D	16.5x6 Merit Q+ Style Wheel Kit	Drive
WK4719ES2-23KW	4719D	16.5x5 Eat ES2 Style Wheel Kit	Steer
WK4720Q-23KW	4720D	16.5x5 Merit Q+ Style Wheel Kit	Steer
WK4725ES2-23KW	4725D	16.5x6 Eat ES2 Style Wheel Kit	Steer
WK4726ES2-23KW	4726D	16.5x8.625 Eat ES2 Style Wheel Kit	Drive

- High quality hardware kit included
- FMVSS 121 tested and approved





## All Makes Heavy Duty Brake Drums



- **Reduce Your Cost.**
  - Long service life at an affordable price.
- **The Durability You Have Been Looking For.**
  - Quality cast iron provides less wear and longer life.
- **Good Performance and Vibration-Free Operation.**
  - Balancing and tight tolerances ensure your form, fitment and performance expectations are met.

### CROSS REFERENCE

Part Number	Replaces Gunite #	Replaces IHC #	Replaces KIC #	Replaces Meritor #	Replaces Webb #	Description
29BD83CBW	2983C		52230-10	03-122222-002	67518B/F	16.5 X 7 Trailer Spoke balanced
30BD18ABW	3018A			03-122126-002 03-122518-002	68730B/F	16.5 x 7 Fruehauf 10 hole balanced
31BD66BW	3166X	2605082C1	53026-01	03-122978-002	66893B/F	16.5 x 7 Rear balanced
32BD95ABW	3295AX		52120-12	03-122683-002	68981B/F	16.5 X 7 Paccar Rear balanced
36BD00ABW	3600AX	N/A	N/A	123207	66864B	16.5 X 7 Popular 10 hole balanced
37BD10BW	3710X	2605076C1	54238-018	85-123383-002	65710B/F	16.5 X 5 Front balanced
37BD21ABW	3721AX	2605074C1	53075-018 54201-108	123254 123366	61528B/F	15 X 4 Popular Front balanced
37BD57BW	3757X	2605073C1	54213-018		66353B/F	16.5 X 7 IHC Rear balanced
38BD00BW	3800X	2605075C1	54293-018	123448	65548B/F	15 X 4 Popular Front balanced
38BD07ABW	3807AX	2605078C1	54229-018	85-123570-002	66809B 66854B	16.5 X 8-5/8 Popular balanced
39BD22BW	3922X	FLT4400B 2605072C1	60000-018 60001-018	123788 123816	56864F/B	16.5 X 7 Popular 10 hole balanced

• GAWR – 23,000 lbs

• FMVSS 121 tested and approved

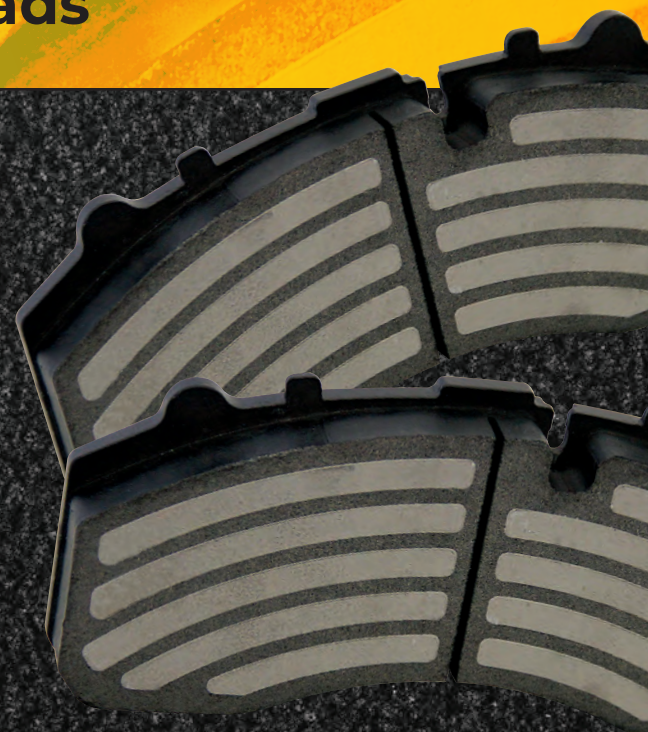




# Rotor Friendly Air Disc Pads

## It's All in the Formula.

- Engineered to provide consistent performance, while offering value and stability.
- Formulated to meet the demands of today's transportation industry.
- Rotor friendly friction compound
- Burnish strips eliminate noise and assist in full friction to rotor contact.



## CROSS REFERENCE

Part Number	OEM	Abex	Bendix	Dura-Brake	Fras-Le	Fritec	Meritor	Perf. Friction	Raybestos
D1203-8323SM	<b>Prevost</b> N8893599 611049	ADB1203FE ADB1203AFE	5013257	BP603	ESD1203	CFD-F067A	MMD1203AF	9178.10	ATD1203HD
D1310-8425SM	<b>Van Hool</b> N508206051 N508206052 <b>Volvo</b> 20976509 21309468 85107768	ADB1310FE ADB1310AFE		BP622	ESD1310	CFD-F257	68324558 / 68325344 68325346 / 68325901	9190.10	ATD1310HD
D1311-8426SM	<b>MCI</b> 04-01-1113	ADB1311		BP641	ESD1311	CFD-F280	KIT225H2BA (MA703) KIT225H2CD (MA761) KIT225H2DA (MA741)	1311.10	ATD1311HD
D1312-8427SM	<b>MCI</b> 04-01-1007 04-01-1019 <b>Volvo</b> 20825594 3093919 3093939 85105485 85506111	ADB1312		BP601	ESD1312	CFD-F120	MDP5019 / MDP5025 MDP5042 / MDP5061	9183.10	ATD1312HD
D1369-8479SM		ADB1369	802078 K070796	N/A	ESD1369	N/A		1369.10	ATD1369HD
D1407-8515SM	<b>Van Hool</b> N508206035 N508206044	ADB1407FE ADB1407AFE		BP621	ESD1407	CFD-F072	MDP5017 / MDP5038 MDP5041 / MDP5054 MDP5065 / MDP5090 MDP5091 / MDP5110 MDP5031	9182.10	ATD1407HD
D1438-8556SM	<b>Wabco</b> 12999737	ADB1438	N/A	N/A	N/A	N/A	MMD1438AF	N/A	N/A
D1518-8727SM	<b>Wabco</b> 12999808	ADB1518	N/A	N/A	ESD1518	F174	MMD1518AF	N/A	N/A
D1777-9007SM	<b>Wabco</b> 12999796	N/A	N/A	N/A	N/A	N/A	MMDWP22AF	N/A	N/A
D2061-9294SM	<b>Wabco</b> 6403229342	N/A	N/A	N/A	N/A	N/A	N/A	N/A	N/A

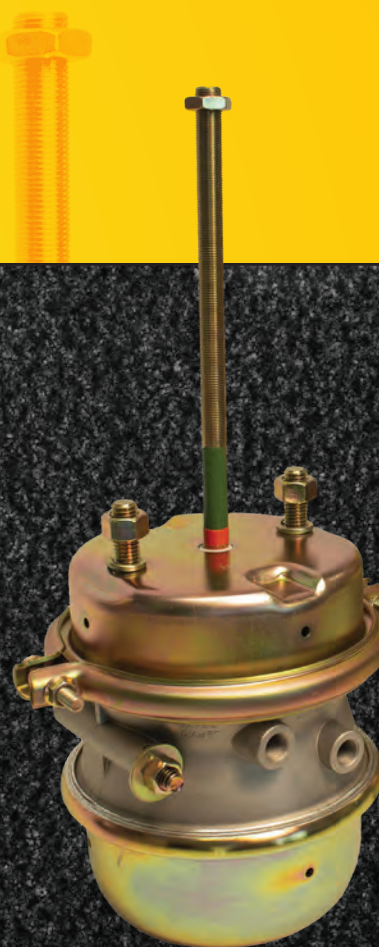
- FMVSS 121 tested and approved





## Reliable Brake Chambers

- Built with Quality Materials for Effective Performance.
- Corrosion Protection for Longer Service Life.
- Competitive Prices for More Savings.



### APPLICATIONS

Part Number	Description
3030SBW	Complete spring brake standard stroke (bulk crated)
3030SBLSW	Complete spring brake long stroke (bulk crated)
3030PBKW	Piggyback kit standard stroke (boxed)
3030PBKLSW	Piggyback kit long stroke (boxed)





# Dependable Cam Tube Repair Kit

- Encloses, protects and extends camshaft life.
- Fits the most popular trailer suspensions with drum brakes.
- Complete kit includes all components needed for one wheel.



## CROSS REFERENCE

Manufacturer	Part Number
WISDOM	CRK11897BW
Euclid	E-11897
Hendrickson	S-28890, S-26348, S-78890
Automann	110.2505
Dayton	03-1451
HD Plus	CSK4181
OTR Fleetpride	OTR11897
Sirco	B8805
TRP	CK11897
Meritor	R615025
NAPA	TWDS28890

Manufacturer	Part Number
WISDOM	CRK11897BW
Leland	K503
Midwest Truck	WA08-5011
BWP	MK134
Haldex	CQ67443
Freightliner	HDRS28890
Mack	8446-S28890
Navistar	HTSS28890
Stoughton	HTS-28890
Volvo	HDRS28890

Available now  
from DTNA Parts.



Wisdom is a registered trademark of Wisdom Products, Inc. Accuride, Allison, Bendix, Bendix ADB22X™, Bosch, Clark, Dana, Dayton, Dexter, Dodge, Eaton, Ford, Freightliner, Fruehauf, GM, Hayes, Hendrickson, IHC, Intraax®, Isuzu, Kenworth, Kershaw, KIC, Kenworth, Mack, Meritor, MotorWheel, Navistar, Peterbilt, Pro-Par, SAF, Spicer, Standard Forge, TRW, Volvo, Wabco and Workhorse are registered trademarks of their respective companies. Any references in this brochure to company names or trademarks are solely for identification and cross reference purposes and implies no rights of ownership by Wisdom Products.